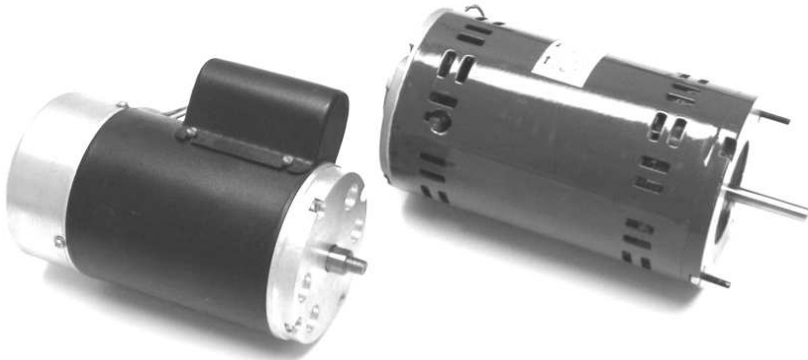
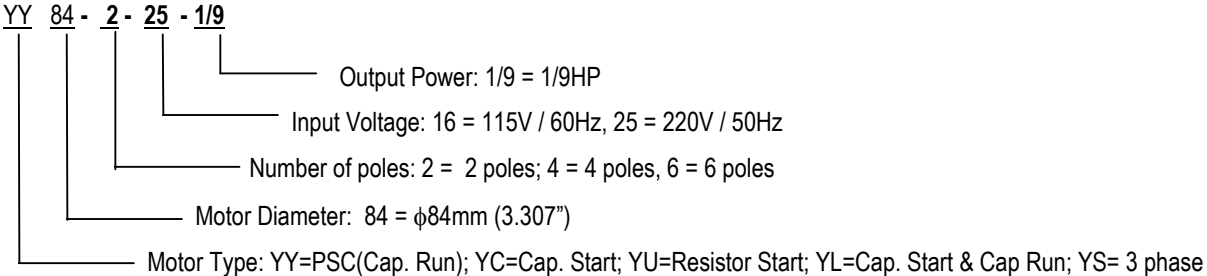


**84mm (3.40") Frame Size AC Motors**



● **Product Code for NEMA SIZE AC Motors**



● **AC Motor Specifications**

Motor Type	Single Phase (Cap. Run / start) / 3 Phase AC Induction Motor		
Insulation Resistance	100 M ohms or more when 500 VDC is applied between the windings and the frame		
Dielectric Strength	Withstand 1.5 kV at 50 / 60 Hz applied between the windings and the frame for 1 min.		
Ambient Temperature	14°F ~ 104°F (-10°C ~ 40°C), nonfreezing		
Ambient Humidity	85% maximum		
Output Power	Up to 1/9HP (80W)	Safety standard	UL, CE
Voltage Rating	Single phase 115V / 230V	Frequency (Hz)	60 / 50
Shaft Diameter	6~8 mm	Insulation Class	B, F
Number of Poles	2, 4, (6)	Nominal Speed ( 60Hz )	3100 rpm / 1550 rpm (60Hz)
Degree of Protection	ODP, IP20, TEFC	Mounting Style	Face mount, Rigid base

● **Dimensions:**

