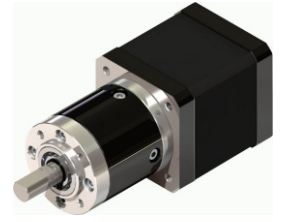


**36PA
42BYG**

**步进行星齿轮减速电机
PLANET GEAR STEPPER MOTOR**



● 齿轮箱参数(Gear Box Data):

减速比/Reduction Ratio(1:X)	3.7	5.2	13.7	19.2	26.9	50.9	71.2	99.5	139
精确减速比/Exact Reduction Ratio(X:1)	$\frac{63}{17}$	$\frac{57}{11}$	$\frac{3969}{289}$	$\frac{3591}{189}$	$\frac{3249}{121}$	$\frac{250047}{4913}$	$\frac{226233}{3179}$	$\frac{204687}{2057}$	$\frac{185193}{1331}$
传动级数/Number of gear trains(#)	1	1	2	2	2	3	3	3	3
最大允许力距/Max. Permissible Torque (kg.cm)	20		25			30			
瞬间允许力距/Moment Permissible Torque(kg.cm)	60		60			60			
齿轮箱长度/ Gear Box Length {L (mm)}	31		39			46.5			

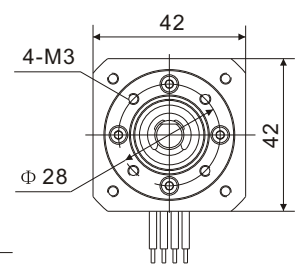
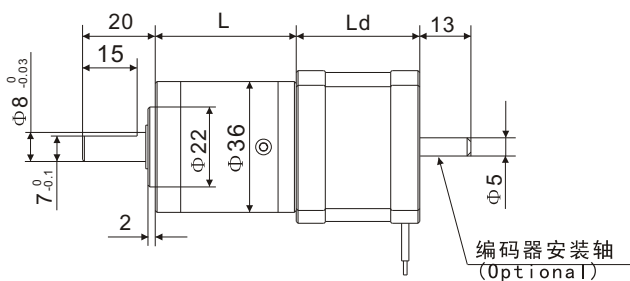
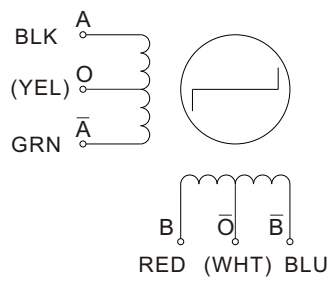
● 马达参数(Motor specifications):

电机型号 Motor Model #	步距角 Step Angle (°)	机身长度 Length (Ld) (mm)	相电压 Rated Voltage (V)	相电流 Rated Current (A)	相电阻 Phase Resistance (Ω)	相电感 Phase Inductance (mH)	静力矩 Holding Torque (g.cm)	引线 Lead Wire (#)
42BYGH25(M)-091-4A/B	1.8/0.9	25	3	0.91	3.3	8	1600	4
42BYGH34(M)-040-4A/B	1.8/0.9	31	12	0.40	30	37	2200	4
42BYGH40(M)-040-6A/B	1.8/0.9	40	12	0.40	30	21	2570	6
42BYGH40(M)-160-4A/B	1.8/0.9	40	2.78	1.60	1.65	3.2	3600	4
42BYGH48(M)-040-6A/B	1.8/0.9	48	12	0.40	30	25	3200	6
42BYGH48(M)-120-4A/B	1.8/0.9	48	3.6	1.20	3	5	4500	4

说明: A:单出轴; B:双出轴。
Note: A: single shaft, B: double shaft
M=0.9 Step Angle

● 外形和安装尺寸(Dimensions):

4(6)Leads



● 型号定义(Product Code):

机座号 36	行星齿轮 PA	减速比 27G	马达机座 - 42	混合式 BYG	机身长度 34 - 040	相电流 - 6	引线数 B	出轴
Frame size	Planetary	Gear Ratio	Motor size	Hybrid Motor	Body Length	Hybrid Motor	#leads	Shaft
36=Φ36		27=27:1	42=42X42		34=34mm	030=0.30A	6=6leads	A=single B=double

www.sei-automation.com E-mail:sales@sei-automation.com Tel:1-408-980-9822