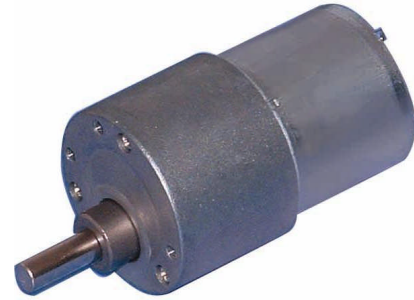


φ37mm

SPUR GEARHEAD (正齿轮箱) w/

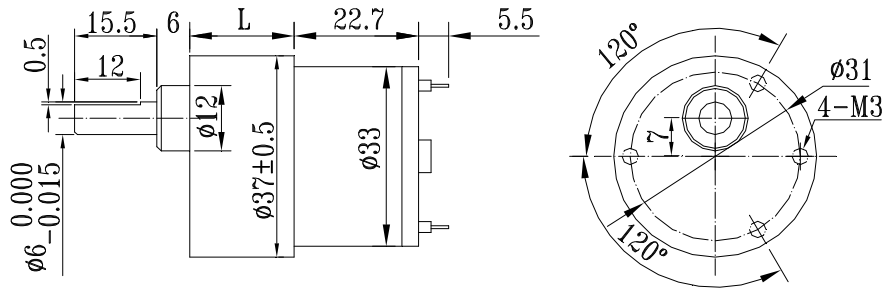
33ZYT PM DC Motor (永磁直流马达)



● GEARHEAD SPECIFICATIONS

Gear Ratio	Stage	Eff.	Rated Load	Max. Load	Length	
减速比	级数	效率	额定负载	最大负载	长度	
1:X	#	%	Kg.cm	Kg.cm	mm	
6	10	2	90	2	6	26
20	30	3	81	3	9	26
60	100	4	73	4	12	26
200	300	5	66	5	15	33.5
600	810	6	59	6	18	33.5
1800	2430	7	48	8	24	33.5

● DIMENSIONS



● MOTOR SPECIFICATIONS

Model	Rated	No-load		Rated				Stall	Motor	
	Voltage VDC	Current A	Speed r/min	Current A	Speed r/min	Torque g.cm	Power W	Torque g.cm	Dia. mm	Length mm
33ZYT23-12-30	12	0.02	3000	0.076	2250	20	0.5	80	33	22.7
33ZYT23-12-45	12	0.05	4500	0.200	3500	35	1.3	140	33	22.7
33ZYT23-12-60	12	0.06	6000	0.260	4500	35	1.6	140	33	22.7
33ZYT23-24-30	24	0.01	3000	0.035	2250	20	0.5	80	33	22.7
33ZYT23-24-45	24	0.05	4500	0.095	3500	35	1.3	140	33	22.7
33ZYT23-24-60	24	0.06	6000	0.120	4500	35	1.6	140	33	22.7

● GEARMOTOR SPECIFICATIONS 37JB8KxxxG-Motor Model

(IN-LB) = 0.867313*X(Kg.cm)

Volt.	Speed	Gear Ratio													
		6	10	20	30	60	100	200	300	600	810	1800	2430		
12 Vdc	3000	Efficiency %	81	81	73	73	66	66	59	59	53	53	48	48	
		No-load speed (RPM)	500	300	150	100	50.0	30.0	15.0	10.0	5.0	3.7	1.7	1.2	
		Rated speed (RPM)	375	225	113	75	37.5	22.5	11.3	7.5	3.8	2.8	1.3	0.9	
	4500	No-load speed (RPM)	750	450	225	150	75.0	45.0	22.5	15.0	7.5	5.6	2.5	1.9	
		Rated speed (RPM)	583	350	175	117	58.3	35.0	17.5	11.7	5.8	4.3	1.9	1.4	
		Rated load (Kg.cm)	0.17	0.28	0.51	0.77	1.4	2.3	4.1	5	6	6	8	8	
	6000	No-load speed (RPM)	1000	600	300	200	100.0	60.0	30.0	20.0	10.0	7.4	3.3	2.5	
		Rated speed (RPM)	750	450	225	150	75.0	45.0	22.5	15.0	7.5	5.6	2.5	1.9	
		Rated load (Kg.cm)	0.17	0.28	0.51	0.77	1.4	2.3	4.1	5	6	6	8	8	
	24 Vdc	3000	No-load speed (RPM)	500	300	150	100	50.0	30.0	15.0	10.0	5.0	3.7	1.7	1.2
			Rated speed (RPM)	375	225	113	75	37.5	22.5	11.3	7.5	3.8	2.8	1.3	0.9
			Rated load (Kg.cm)	0.10	0.16	0.29	0.44	0.8	1.3	2.4	3.5	6	6	8	8
4500		No-load speed (RPM)	750	450	225	150	75.0	45.0	22.5	15.0	7.5	5.6	2.5	1.9	
		Rated speed (RPM)	583	350	175	117	58.3	35.0	17.5	11.7	5.8	4.3	1.9	1.4	
		Rated load (Kg.cm)	0.17	0.28	0.51	0.77	1.4	2.3	4.1	5	6	6	8	8	
6000		No-load speed (RPM)	1000	600	300	200	100.0	60.0	30.0	20.0	10.0	7.4	3.3	2.5	
		Rated speed (RPM)	750	450	225	150	75.0	45.0	22.5	15.0	7.5	5.6	2.5	1.9	
		Rated load (Kg.cm)	0.17	0.28	0.51	0.77	1.4	2.3	4.1	5	6	6	8	8	