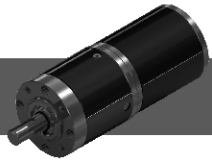


56PA

PMDC PLANET GEAR MOTOR

55ZYT68

直流行星齿轮减速电机



## Motor specifications/马达参数

电机型号 Model #	额定电压 Rated Voltage	空载转速 No-load speed	空载电流 No-load Current	额定转速 Rated speed	额定电流 Rated Current	额定力矩 Rated Torque	额定功率 Rated Power	额定效率 Rated Eff	马达长度(Ld) Motor Length
55ZYT68-1236	12V	3600rpm	300mA	3000rpm	3.2A	720g.cm	22W	57.8%	68mm
55ZYT68-2436	24V	3600rpm	150mA	3000rpm	1.8A	814g.cm	25W	58.0%	68mm
55ZYT102-1230	12V	3000rpm	300mA	2500rpm	3.2A	864g.cm	22W	57.8%	102mm
55ZYT102-2435	24V	3500rpm	180mA	3000rpm	1.8A	821g.cm	25W	58.5%	102mm

## Gear Motor Technical Data/齿轮减速电机主要参数

## 56PAXXXG/55ZYT68-1236

Reduction ratio (1:X)	3.6	4.3	13	15	18	47	55	65	77	168	198	234	276	326
Stage (#)	1		2			3				4				
No-load Speed (rpm)	1000	837	277	240	200	77	65	55	47	21	18	15	13	11
Rated Speed (rpm)	833	698	231	200	167	64	55	46	39	18	15	13	11	9.2
Rated Torque (kg.cm)	2.2	2.6	6.7	7.8	9.3	21	24	29	34	63	74	88	103	122
Max load (kg.cm)	100		200			400				600				
Gear Box Length(mm)	47		59			71				83				

## 56PAXXXG/55ZYT68-2436

Reduction ratio (1:X)	3.6	4.3	13	15	18	47	55	65	77	168	198	234	276	326
Stage (#)	1		2			3				4				
No-load Speed (rpm)	1000	837	277	240	200	77	65	55	47	21	18	15	13	11
Rated Speed (rpm)	833	698	231	200	167	64	55	46	39	18	15	13	11	9.2
Rated Torque (kg.cm)	2.5	3.0	7.6	8.8	11	23	27	32	38	71	84	99	117	138
Max load (kg.cm)	100		200			400				600				
Gear Box Length(mm)	47		59			71				83				

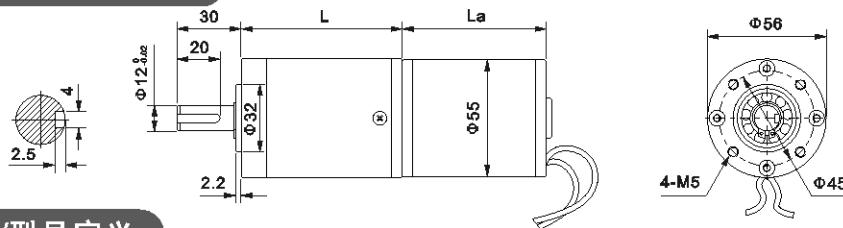
## 56PAXXXG/55ZYT102-2430

Reduction ratio (1:X)	3.6	4.3	13	15	18	47	55	65	77	168	198	234	276	326
Stage (#)	1		2			3				4				
No-load Speed (rpm)	833	698	231	200	167	64	55	46	39	18	15	13	11	9.2
Rated Speed (rpm)	694	581	192	167	139	53	45	38	32	15	13	11	9.1	7.7
Rated Torque (kg.cm)	2.6	3.2	8.1	9.3	11	25	29	34	41	75	89	105	124	146
Max load (kg.cm)	100		200			400				600				
Gear Box Length(mm)	47		59			71				83				

## 56PAXXXG/55ZYT102-2435

Reduction ratio (1:X)	3.6	4.3	13	15	18	47	55	65	77	168	198	234	276	326
Stage (#)	1		2			3				4				
No-load Speed (rpm)	972	814	269	233	194	74	63	54	46	21	18	15	13	11
Rated Speed (rpm)	833	698	231	200	167	64	55	46	39	18	15	13	11	9.2
Rated Torque (kg.cm)	2.5	3.0	7.7	8.9	11	24	28	33	39	72	85	100	118	139
Max load (kg.cm)	100		200			400				600				
Gear Box Length(mm)	47		59			71				83				

## Dimensions/外形和安装尺寸



## Product Code/型号定义

56	PA	15G	55	ZYT	68	2430	ME
机座号 Frame size 56=Φ56mm	行星齿轮 Planetary	减速比 Gear Ratio 15=15:1	马达直径 Motor size 55=Φ55mm	马达类型 Motor Type	马达长度 Motor Length 68=68mm	电压/转速 Voltage and speed 24=24V; 30=3000rpm	可带编码器 Optional Encoder ME = Magnet Encoder