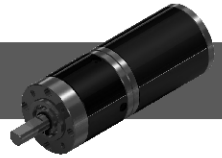


45PA

45ZYT67

PMDc PLANET GEAR MOTOR

直流行星齿轮减速电机



Motor specifications/马达参数

电机型号 Model #	额定电压 Rated Voltage	空载转速 No-load speed	空载电流 No-load Current	额定转速 Rated speed	额定电流 Rated Current	额定力矩 Rated Torque	额定功率 Rated Power	额定效率 Rated Eff	马达长度(Ld) Motor Length
45ZYT67-2435	24V	3500rpm	150mA	3000rpm	1.8A	806g.cm	25W	57.5%	67mm
45ZYT67-2440	24V	4000rpm	250mA	3200rpm	2.1A	900g.cm	30W	58.7%	67mm
45ZYT78-2436	24V	3600rpm	200mA	3100rpm	2.0A	864g.cm	28W	57.3%	78mm
45ZYT78-2440	24V	4000rpm	300mA	3300rpm	2.3A	936g.cm	32W	57.5%	78mm

Gear Motor Technical Data/齿轮减速电机主要参数

45PAXXXG/45ZYT67-2435

Reduction ratio (1:X)	4	5	13	19	27	51	71	100	139	189	264	369	515	720
Stage (#)	1		2			3				4				
No-load Speed (rpm)	946	673	257	182	131	69	49	35	25	18	13	9.5	6.8	4.9
Rated Speed (rpm)	811	577	221	156	112	59	42	30	16	16	11	8.1	5.8	4.2
Rated Torque (kg.cm)	2.5	3.6	7.9	11	16	25	35	49	68	79	100	100	100	100
Max load (kg.cm)	50		100			150				200				
Gear Box Length(mm)	39		49			59				69				

45PAXXXG/45ZYT67-2440

Reduction ratio (1:X)	4	5	13	19	27	51	71	100	139	189	264	369	515	720
Stage (#)	1		2			3				4				
No-load Speed (rpm)	1081	769	294	208	149	78	56	40	29	21	15	11	7.8	5.6
Rated Speed (rpm)	865	615	235	167	119	63	45	32	32	17	12	8.7	6.2	4.4
Rated Torque (kg.cm)	2.8	4.0	8.8	12	17	28	29	55	76	88	100	100	100	100
Max load (kg.cm)	50		100			150				200				
Gear Box Length(mm)	39		49			59				69				

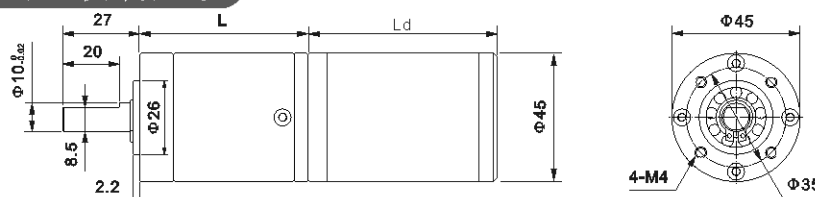
45PAXXXG/45ZYT78-2436

Reduction ratio (1:X)	4	5	13	19	27	51	71	100	139	189	264	369	515	720
Stage (#)	1		2			3				4				
No-load Speed (rpm)	973	692	265	188	134	65	51	36	26	19	14	9.7	4.0	5.0
Rated Speed (rpm)	838	596	228	161	117	61	44	31	22	16	12	8.4	6.0	4.3
Rated Torque (kg.cm)	2.7	3.8	8.4	12	17	27	37	52	73	85	100	100	100	100
Max load (kg.cm)	50		100			150				200				
Gear Box Length(mm)	39		49			59				69				

45PAXXXG/45ZYT78-2440

Reduction ratio (1:X)	4	5	13	19	27	51	71	100	139	189	264	369	515	720
Stage (#)	1		2			3				4				
No-load Speed (rpm)	1081	769	294	208	149	78	56	40	29	21	15	11	7.7	5.6
Rated Speed (rpm)	892	635	243	172	123	65	46	33	24	18	12	8.9	6.4	4.6
Rated Torque (kg.cm)	2.9	4.1	9.2	13	18	29	41	27	79	92	100	100	100	100
Max load (kg.cm)	50		100			150				200				
Gear Box Length(mm)	39		49			59				69				

Dimensions/外形和安装尺寸



Product Code/型号定义

45	PA	27G	45	ZYT	67	2430	ME
机座号 Frame size 45=Φ45mm	行星齿轮 Planetary	减速比 Gear Ratio 27=27:1	马达直径 Motor size 45=Φ45mm	马达类型 Motor Type	马达长度 Motor Length 67=67mm	电压/转速 Voltage and speed 24=24V; 30=3000rpm	可带编码器 Optional Encoder ME = Magnet Encoder