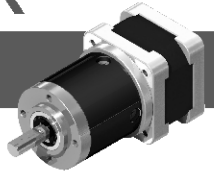


# 32PA PLANET GEAR STEPPER MOTOR

## 35BYG 步进行星齿轮减速电机



### Gear Box Data/齿轮箱参数

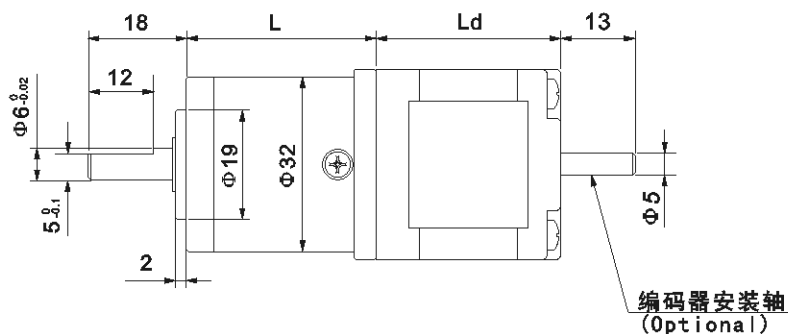
减速比/Reduction Ratio(1:X)	4	5	13	19	27	51	71	100	139
精确减速比/Exact Reduction Ratio(X:1)	$3\frac{12}{17}$	$5\frac{2}{11}$	$13\frac{212}{289}$	$19\frac{38}{187}$	$26\frac{103}{121}$	$50\frac{4397}{4913}$	$71\frac{524}{3179}$	$99\frac{1044}{2057}$	$139\frac{184}{1331}$
传动级数/Number of gear trains(#)	1		2			3			
最大允许力距/Max. Permissible Torque (kg.cm)	20		25			30			
瞬间允许力距/Moment Permissible Torque(kg.cm)	40		50			60			
齿轮箱长度/ Gear Box Length(mm)	31		39			46.5			

### Motor specifications/马达参数

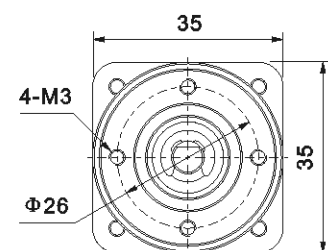
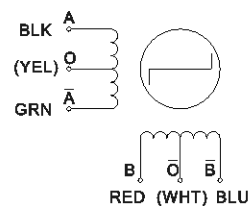
电机型号	步距角	机身长度	相电压	相电流	相电阻	相电感	静力矩	引线
Motor Model #	Step Angle	Length (Ld)	Rated Voltage	Rated Current	Phase Resistance	Phase Inductance	Holding Torque	Lead Wire
	(°)	(mm)	(V)	(A)	(Ω)	(mH)	(g.cm)	(#)
35BYG20(M)-073-4A/B	1.8/0.9	20	6.57	0.73	9	4	600	4
35BYG20(M)-040-4A/B	1.8/0.9	20	10.8	0.40	27	17	600	4
35BYG26(M)-075-4A/B	1.8/0.9	26	3.23	0.75	4.3	4	700	4
35BYG28(M)-058-4A/B	1.8/0.9	28	7	0.54	13	9.5	1000	4
35BYG28(M)-100-4A/B	1.8/0.9	28	3.50	1.00	3.5	3.5	1000	4
35BYG34(M)-050-6A/B	1.8/0.9	34	11	0.50	22	12	1000	6

说明:A:单出轴;B:双出轴。  
Note:A: single shaft, B: double shaft  
M=0.9 Step Angle

### Dimensions/外形和安装尺寸



### 4(6)Leads



### Product Code/型号定义

32	PA	27G	35	BYG	20	073	4	A
机座号 Frame size 32=Φ32mm	行星齿轮 Planetary	减速比 Gear Ratio 27=27:1	马达机座 Motor size 35=35X35	混合式 Hybrid Motor	机身长度 Body Length 20=20mm	相电流 Hybrid Motor 073=0.73A	引线数 #Leads 4=4leads	出轴 Shaft A=single Shaft B=double