

25PA

PMDC PLANET GEAR MOTOR

24ZYT30

直流行星齿轮减速电机



## Motor specifications/马达参数

电机型号 Model #	额定电压 Rated Voltage	空载转速 No-load speed	空载电流 No-load Current	额定转速 Rated speed	额定电流 Rated Current	额定力矩 Rated Torque	堵转电流 Stall Current	堵转力矩 Stall Torque	额定功率 Rated Power
24ZYT30-1230	12V	3000rpm	40mA	2400rpm	90mA	20g.cm	0.30A	100g.cm	0.5W
24ZYT30-1245	12V	4500rpm	60mA	3600rpm	170mA	25g.cm	0.50A	125g.cm	0.9W
24ZYT30-1260	12V	6000rpm	70mA	4800rpm	240mA	30g.cm	1.0A	150g.cm	1.5W
24ZYT30-2460	24V	6000rpm	25mA	4500rpm	60mA	40g.cm	0.60A	160g.cm	1.8W

## Gear Motor Technical Data/齿轮减速电机主要参数

## 25PAXXXG/24ZYT30-1230-6/4

Reduction ratio (1:X)	16	19	22	64	76	90	107	256	304	361	428	509	1024	1216
Stage (#)	2			3			4			5				
No-load Speed (rpm)	187	158	133	47	39	33	28	12	9.8	8.3	7.0	5.9	2.9	2.5
Rated Speed (rpm)	150	126	107	37	31	26	22	9.4	7.9	6.6	5.6	4.7	2.3	2.0
Rated Torque (kg.cm)	0.11	0.14	0.16	0.39	0.46	0.55	0.65	1.3	1.6	1.8	2.2	2.6	4.6	5.4
Max load (kg.cm)	9			12			15			21				
Length A/Length B(mm)	26/21.5			31/26.5			36/31.5			41/36.5				

## 25PAXXXG/24ZYT30-1245-6/4

Reduction ratio (1:X)	16	19	22	64	76	90	107	256	304	361	428	509	1024	1216
Stage (#)	2			3			4			5				
No-load Speed (rpm)	281	237	200	70	59	50	42	17	15	12	10	8.8	4.4	3.7
Rated Speed (rpm)	225	189	160	56	47	40	33	14	12	10	8.4	7.1	3.5	2.9
Rated Torque (kg.cm)	0.23	0.27	0.32	0.78	0.93	1.1	1.3	2.7	3.2	3.7	4.4	5.3	7.0	7.0
Max load (kg.cm)	9			12			15			21				
Length A/Length B(mm)	26/21.5			31/26.5			36/31.5			41/36.5				

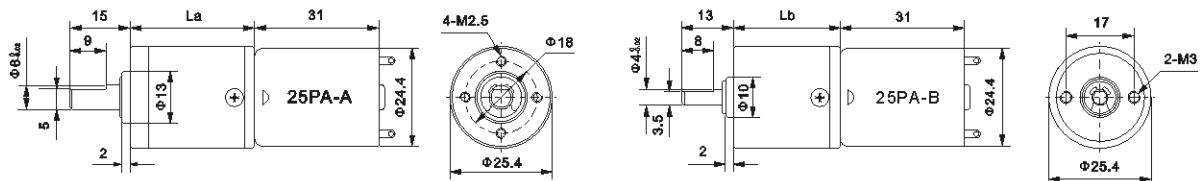
## 25PAXXXG/24ZYT30-1260-6/4

Reduction ratio (1:X)	16	19	22	64	76	90	107	256	304	361	428	509	1024	1216
Stage (#)	2			3			4			5				
No-load Speed (rpm)	375	316	267	94	79	66	56	23	20	16	14	12	5.9	4.9
Rated Speed (rpm)	300	252	213	75	63	53	45	19	16	13	11	9.4	4.7	3.9
Rated Torque (kg.cm)	0.35	0.41	0.49	1.1	1.4	1.6	1.9	4.0	4.7	5.6	6.7	7.0	7.0	7.0
Max load (kg.cm)	9			12			15			21				
Length A/Length B(mm)	26/21.5			31/26.5			36/31.5			41/36.5				

## 25PAXXXG/24ZYT30-2460-6/4

Reduction ratio (1:X)	16	19	22	64	76	90	107	256	304	361	428	509	1024	1216
Stage (#)	2			3			4			5				
No-load Speed (rpm)	375	316	267	94	79	66	56	23	20	16	14	12	5.9	4.9
Rated Speed (rpm)	281	237	200	70	59	50	42	17	15	12	10	8.8	4.4	3.7
Rated Torque (kg.cm)	0.46	0.55	0.65	1.5	1.8	2.2	2.6	5.3	6.3	7.0	7.0	7.0	7.0	7.0
Max load (kg.cm)	9			12			15			21				
Length A/Length B(mm)	26/21.5			31/26.5			36/31.5			41/36.5				

## Dimensions/外形和安装尺寸



## Product Code/型号定义

25	PA	16G	24	ZYT	30	1230	6/4
机座号 Frame size 25=Φ25mm	行星齿轮 Planetary	减速比 Gear Ratio 16=16:1	马达直径 Motor size 24=Φ24mm	马达类型 Motor Type	马达长度 Motor Length 32=32mm	电压/转速 Voltage and speed 12=12V;30=3000rpm	轴直径 Shaft 6=Φ6mm;4=Φ4mm