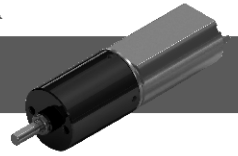


16PA

PMDC PLANET GEAR MOTOR

16ZYT26

直流行星齿轮减速电机



Motor specifications/马达参数

电机型号 Model #	额定电压 Rated Voltage	空载转速 No-load speed	空载电流 No-load Current	额定转速 Rated speed	额定电流 Rated Current	额定力矩 Rated Torque	堵转电流 Stall Current	堵转力矩 Stall Torque	电机长度 Length
16ZYT19-06105	6V	10500rpm	41mA	8000rpm	130mA	4.3g.cm	0.43A	19g.cm	19mm
16ZYT19-0598	5V	9800rpm	45mA	7400rpm	150mA	4.0g.cm	0.47A	17g.cm	19mm
16ZYT27-0575	5V	7500rpm	38mA	6000rpm	150mA	7.6g.cm	0.63A	38g.cm	27mm
16ZYT27-07103	7V	10300rpm	46mA	8500rpm	200mA	7.0g.cm	0.82A	46g.cm	27mm

Gear Motor Technical Data/齿轮减速电机主要参数

16PAXXXG/16ZYT19-06105

Reduction ratio (1:X)	4	5	16	19	22	64	76	90	107	256	304	361	428	509
Stage (#)	1		2			4				5				
No-load Speed (rpm)		2211			465				98					21
Rated Speed (rpm)		1684			355				75					16
Rated Torque (kg.cm)		0.017			0.07				0.28					1.14
Max load (kg.cm)	3		4.5			6				7.5				
Length (mm)	12.3		15.8			19.3				22.8				

16PAXXXG/15ZYT19-0598

Reduction ratio (1:X)	4	5	16	19	22	64	76	90	107	256	304	361	428	509
Stage (#)	1		2			4				5				
No-load Speed (rpm)		2063			434				92					19
Rated Speed (rpm)		1588			328				69					15
Rated Torque (kg.cm)		0.016			0.065				0.26					1.1
Max load (kg.cm)	3		4.5			6				7.5				
Length (mm)	12.3		15.8			19.3				22.8				

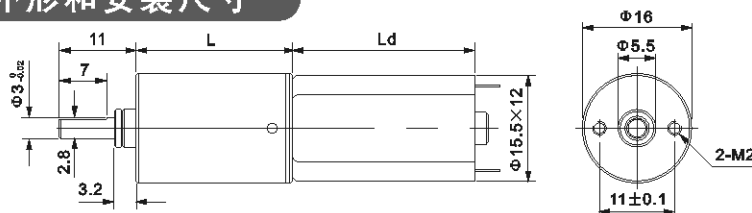
16PAXXXG/16ZYT27-0575

Reduction ratio (1:X)	4	5	16	19	22	64	76	90	107	256	304	361	428	509
Stage (#)	1		2			4				5				
No-load Speed (rpm)		1579			332				71					15
Rated Speed (rpm)		1263			266				56					12
Rated Torque (kg.cm)		0.031			0.12				0.5					2.0
Max load (kg.cm)	3		4.5			6				7.5				
Length (mm)	12.3		15.8			19.3				22.8				

16PAXXXG/16ZYT27-07103

Reduction ratio (1:X)	4	5	16	19	22	64	76	90	107	256	304	361	428	509
Stage (#)	1		2			4				5				
No-load Speed (rpm)		2168			457				96					20
Rated Speed (rpm)		1789			377				79					17
Rated Torque (kg.cm)		0.028			0.11				0.46					1.9
Max load (kg.cm)	3		4.5			6				7.5				
Length (mm)	12.3		15.8			19.3				22.8				

Dimensions/外形和安装尺寸



Product Code/型号定义

16	PA	16G	16	ZYT	27	0798
机座号 Frame size 16=Φ16mm	行星齿轮 Planetary	减速比 Gear Ratio 16=16:1	马达直径 Motor size 16=Φ16mm	马达类型 Motor Type	马达长度 Motor Length 27=27mm	电压/转速 Voltage and speed 07=7V;98=9800rpm