

# 56PA-12

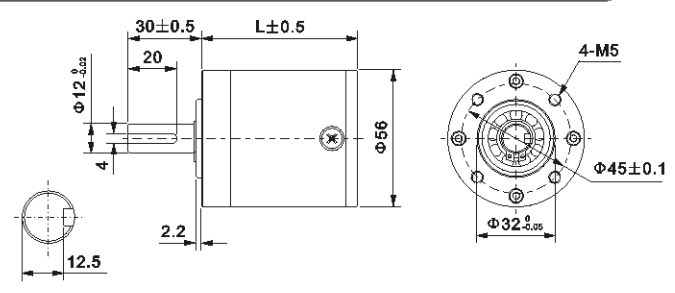
# PLANET GEAR HEAD

Φ56mm

微型行星齿轮箱



## Dimensions/外形和安装尺寸



Housing Material (外壳材料)	Metal (金属)
Backlash at No-Load (无负荷时背隙)	≤3°
Bearing at Output (输出轴承)	Ball or Sleeve
Permissible Overhung Load (径向负荷)	≤20kg
Permissible Thrust Load (轴向负荷)	≤10kg
Max. Radial Play (最大径向间隙)	≤0.05mm
Max. Thrust play (最大轴向间隙)	≤0.3mm
Note: Overhung Load (径向负荷) at 10 mm from flange	

## Gear Box Specifications 齿轮箱参数

齿轮箱型号 Model	减速比	精确减速比	传动级数	最大允许力距	瞬间允许力距	效率	齿轮箱长度
	Reduction Ratio 1:X	Exact Reduction Ratio 1:X	Number of Gear Train #	Rated Permissible Torque Kg.cm	Momentary Permissible Torque Kg.cm	Efficiency %	Gear Box Length mm
56PA0003G-12	3	3 3/5	1	50	150	85	47
56PA0004G-12	4	4 1/4					
56PA0013G-12	13	12 24/25	2	100	300	72	59
56PA0015G-12	15	15 3/10					
56PA0018G-12	18	18 1/16					
56PA0047G-12	47	46 82/125	3	200	400	61	71
56PA0055G-12	55	55 2/25					
56PA0065G-12	65	65 1/40					
56PA0076G-12	77	76 49/64					
56PA0168G-12	168	167 601/625					
56PA0198G-12	198	198 36/125	4	300	600	52	83
56PA0234G-12	234	234 9/100					
56PA0276G-12	276	276 57/160					
56PA0326G-12	326	326 65/256					

## Extended reduction ratio/扩展的减速比

齿轮箱型号 Model	减速比	精确减速比	传动级数	最大允许力距	瞬间允许力距	效率	齿轮箱长度
	Reduction Ratio 1:X	Exact Reduction Ratio 1:X	Number of Gear Train #	Rated Permissible Torque Kg.cm	Momentary Permissible Torque Kg.cm	Efficiency %	Gear Box Length mm
56PA0605G-12	605	604 45/68	5	400	700	45	95
56PA0714G-12	714	713 523/625					
56PA0843G-12	843	842 181/250					
56PA0995G-12	995	994 353/400					
56PA1175G-12	1175	1174 329/640					
56PA1387G-12	1387	1386 194/335					

## Pinion Specifications/马达齿轮型式

Module/模数	1.0	
No. of teeth/齿数	15	12
Pressure angle/压力角	20°	
Hole diameter/孔径	Φ6	
Reduction ratio/减速比	3/13/47/168/605	4/15/18/55/65/76/198/234/276/326/714/843/994/1175/1387

- Most Applied Motors:
- 1.55ZYT/57ZYT/63ZYT PMDC motor
  - 2.57BLF/57BLY BLDC motor
  - 3.57BYG Stepper Motor
- 适用范围:
1. 55ZYT/57ZYT/63ZYT 永磁直流电机
  2. 57BLF/57BLY 直流无刷电机
  3. 57BYG 直流步进电机

## Motor Installation/马达装卸方法

