

45PA-10

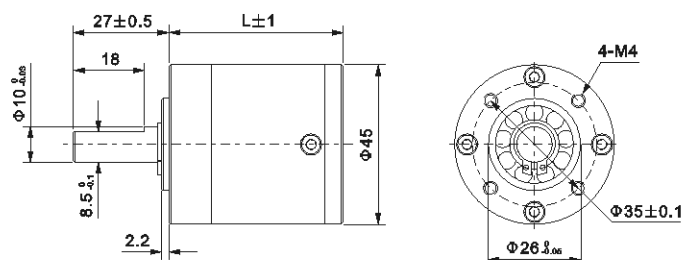
PLANET GEAR HEAD

Φ45mm

微型行星齿轮箱



Dimensions/外形和安装尺寸



Housing Material (外壳材料)	Metal (金属)
Backlash at No-Load (无负荷时背隙)	≤3°
Bearing at Output (输出轴承)	Ball or Sleeve
Permissible Overhung Load (径向负荷)	≤8kg
Permissible Thrust Load (轴向负荷)	≤3kg
Max. Radial Play (最大径向间隙)	≤0.05mm
Max. Thrust play (最大轴向间隙)	≤0.3mm
Note: Overhung Load (径向负荷) at 10 mm from flange	

Gear Box Specifications 齿轮箱参数

齿轮箱型号 Model	减速比	精确减速比	传动级数	最大允许力距	瞬间允许力距	效率	齿轮箱长度
	Reduction Ratio 1:X	Exact Reduction Ratio 1:X	Number of Gear Train #	Rated Permissible Torque Kg.cm	Momentary Permissible Torque Kg.cm	Efficiency %	Gear Box Length mm
45PA0004G-10	4	3 12/17	1	40	80	85	39
45PA0005G-10	5	5 2/11					
45PA0013G-10	14	13 212/289					
45PA0019G-10	19	19 38/187	2	60	120	72	49
45PA0027G-10	27	26 103/121					
45PA0051G-10	51	50 4397/4913	3	80	160	61	59
45PA0071G-10	71	71 524/3179					
45PA0100G-10	100	99 1044/2057					
45PA0139G-10	139	139 184/1331					
45PA0189G-10	189	188 51013/83521	4	100	200	52	69
45PA0264G-10	264	263 39370/54043					
45PA0369G-10	369	368 28689/34969					
45PA0515G-10	516	515 14250/14641					
45PA0720G-10	721	720 14481/14641					

Extended reduction ratio/扩展的减速比

齿轮箱型号 Model	减速比	精确减速比	传动级数	最大允许力距	瞬间允许力距	效率	齿轮箱长度
	Reduction Ratio 1:X	Exact Reduction Ratio 1:X	Number of Gear Train #	Rated Permissible Torque Kg.cm	Momentary Permissible Torque Kg.cm	Efficiency %	Gear Box Length mm
45PA0977G-10	977	977 318590/918731	5	120	240	45	79
45PA1367G-10	1367	1366 352585/594473					
45PA1911G-10	1911	1910 332327/384659					
45PA2672G-10	2672	2671 224176/248897					
45PA3736G-10	3736	3736 5521/161051					

Pinion Specifications/马达齿轮型式

Module/模数	0.7	
No. of teeth/齿数	17	11
Pressure angle/压力角	20°	
Hole diameter/孔径	Φ4.98	
Reduction ratio/减速比	3.7/13/51/189	5/19/27/71/100/139/264/369/515/720/981/1370/1913/2671/3730

Most Applied Motors:

1. 572/775/45ZYT PMDC motor

2. 42BLF/45BLY BLDC motor

3. 57BYG Stepper Motor

适用范围:

1. 572/775/45ZYT 永磁直流电机

2. 42BLF/45BLY 直流无刷电机

3. 57BYG 直流步进电机

Motor Installation/马达装卸方法

