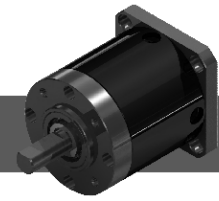


40PA-8

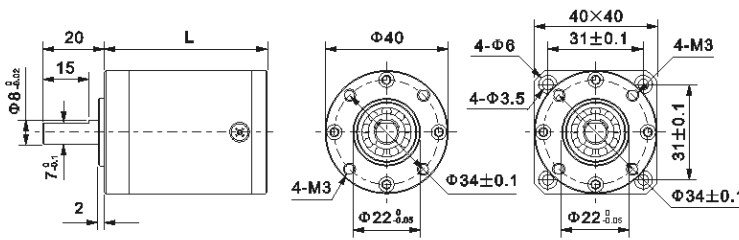
PLANET GEAR HEAD

Φ40mm

微型行星齿轮箱



## Dimensions/外形和安装尺寸



Housing Material (外壳材料)	Metal (金属)
Backlash at No-Load (无负荷时背隙)	≤1°
Bearing at Output (输出轴承)	Ball or Sleeve
Permissible Overhung Load (径向负荷)	≤8kg
Permissible Thrust Load (轴向负荷)	≤3kg
Max. Radial Play (最大径向间隙)	≤0.05mm
Max. Thrust play (最大轴向间隙)	≤0.3mm
Note: Overhung Load (径向负荷) at 10 mm from flange	

## Gear Box Specifications 齿轮箱参数

齿轮箱型号 Model	减速比	精确减速比	传动级数	最大允许力距	瞬间允许力距	效率	齿轮箱长度
	Reduction Ratio	Exact Reduction Ratio	Number of Gear Train	Rated Permissible Torque	Momentary Permissible Torque	Efficiency	Gear Box Length
	1:X	1:X	#	Kg.cm	Kg.cm	%	mm
40PA003G-8	3	3	1	10	30	85	35.5
40PA004G-8	4	4					
40PA005G-8	5	5					
40PA009G-8	9	9					
40PA012G-8	12	12	2	30	90	72	45.5
40PA015G-8	15	15					
40PA020G-8	20	20					
40PA025G-8	25	25					
40PA036G-8	36	36					
40PA045G-8	45	45					
40PA048G-8	48	48	3	40	120	61	55.5
40PA060G-8	60	60					
40PA064G-8	64	64					
40PA080G-8	80	80					
40PA100G-8	100	100					
40PA125G-8	125	125					
40PA144G-8	144	144	4	50	150	52	65.5
40PA180G-8	180	180					
40PA192G-8	192	192					
40PA225G-8	225	225					
40PA240G-8	240	240					
40PA256G-8	256	256					
40PA300G-8	300	300					
40PA320G-8	320	320					
40PA375G-8	375	375					
40PA400G-8	400	400					
40PA625G-8	625	625					

## Pinion Specifications/马达齿轮型式

Module/模数	0.6		
No. of teeth/齿数	12	16	24
Pressure angle/压力角	20°		
Hole diameter/孔径	Φ5.0		
Reduction ratio/减速比	5/25/125/625	4/20/64/80/256/320/400/500	3/9/12/15/36/45/4548/60/144/180/192/225/240/320/375

Most Applied Motors:

- 1.45ZYT PMDC motor
- 2.42BLF/45BLY DC motor
- 3.39BYG/42BYG Stepper Motor

适用范围:

1. 45ZYT 永磁直流电机
2. 42BLF/45BLY 直流无刷电机
3. 39BYG/42BYG 直流步进电机

## Motor Installation/马达装卸方法

