

36PA-8

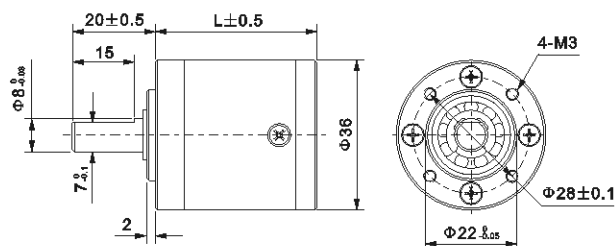
PLANET GEAR HEAD

Φ36mm

微型行星齿轮箱



Dimensions/外形和安装尺寸



Housing Material (外壳材料)	Metal (金属)
Backlash at No-Load (无负荷时背隙)	≤2.5°
Bearing at Output (输出轴承)	Ball or Sleeve
Permissible Overhung Load (径向负荷)	≤3.5kg
Permissible Thrust Load (轴向负荷)	≤2.5kg
Max. Radial Play (最大径向间隙)	≤0.05mm
Max. Thrust play (最大轴向间隙)	≤0.3mm
Note: Overhung Load (径向负荷) at 10 mm from flange	

Gear Box Specifications 齿轮箱参数

齿轮箱型号 Model	减速比	精确减速比	传动级数	最大允许力距	瞬间允许力距	效率	齿轮箱长度
	Reduction Ratio 1:X	Exact Reduction Ratio 1:X	Number of Gear Train #	Rated Permissible Torque Kg.cm	Momentary Permissible Torque Kg.cm	Efficiency %	Gear Box Length mm
36PA0004G-8	4	3 12/17	1	15	45	85	31.1
36PA0005G-8	5	5 2/11					
36PA0013G-8	14	13 212/289					
36PA0019G-8	19	19 38/187	2	20	60	72	38.8
36PA0027G-8	27	26 103/121					
36PA0051G-8	51	50 4397/4913	3	25	75	61	46.5
36PA0071G-8	71	71 524/3179					
36PA0100G-8	100	99 1044/2057					
36PA0139G-8	139	139 184/1331					
36PA0189G-8	189	188 51013/83521	4	30	90	52	54.3
36PA0264G-8	264	263 39370/54043					
36PA0369G-8	369	368 28689/34969					
36PA0515G-8	516	515 14250/14641					
36PA0720G-8	721	720 14481/14641					

Extended reduction ratio/扩展的减速比

齿轮箱型号 Model	减速比	精确减速比	传动级数	最大允许力距	瞬间允许力距	效率	齿轮箱长度
	Reduction Ratio 1:X	Exact Reduction Ratio 1:X	Number of Gear Train #	Rated Permissible Torque Kg.cm	Momentary Permissible Torque Kg.cm	Efficiency %	Gear Box Length mm
36PA0977G-8	977	977 318590/918731	5	35	100	45	61.8
36PA1367G-8	1367	1366 352585/594473					
36PA1911G-8	1911	1910 332327/384659					
36PA2672G-8	2672	2671 224176/248897					
36PA3736G-8	3736	3736 5521/161051					

Pinion Specifications/马达齿轮型式

Module/模数	0.5	
No. of teeth/齿数	17	11
Pressure angle/压力角	20°	
Hole diameter/孔径	Φ2.98/Φ3.15	
Reduction ratio/减速比	3.7/13/51/189	5/19/27/71/100/139/264/369/515/720/981/1370/1913/2671/3730

Most Applied Motors:

1. 3540/540/550/572 PMDC motor

2. 3525 BL/3650BLDC motor

3. 39BYG/42BYG Stepper Motor

适用范围:

1. 3540/540/550/572 永磁直流电机

2. 3525BL/3650BL 直流无刷电机

3. 39BYG/42BYG 直流步进电机

Motor Installation/马达装卸方法

