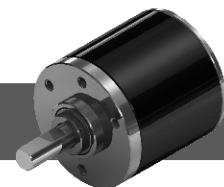


22PA-4

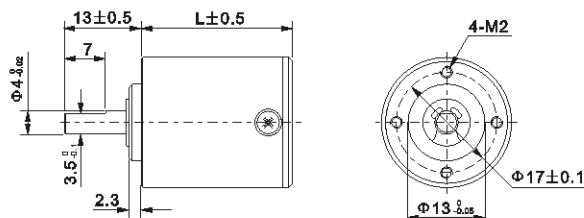
PLANET GEAR HEAD

Φ22mm

微型行星齿轮箱



Dimensions/外形和安装尺寸



Housing Material (外壳材料)	Metal (金属)
Backlash at No-Load (无负荷时背隙)	≤2°
Bearing at Output (输出轴承)	Ball or Sleeve
Permissible Overhung Load (径向负荷)	≤0.5kg
Permissible Thrust Load (轴向负荷)	≤0.5kg
Max. Radial Play (最大径向间隙)	≤0.05mm
Max. Thrust play (最大轴向间隙)	≤0.20mm
Note: Overhung Load (径向负荷) at 10 mm from flange	

Gear Box Specifications 齿轮箱参数

齿轮箱型号 Model	减速比	精确减速比	传动级数	最大允许力矩	瞬间允许力矩	效率	齿轮箱长度
	Reduction Ratio	Exact Reduction Ratio	Number of Gear Train	Rated Permissible Torque	Momentary Permissible Torque	Efficiency	Gear Box Length
	1:X	1:X	#	Kg.cm	Kg.cm	%	mm
22PA0004G-4	4	4	1	3	9	85	15.5
22PA0005G-4	5	4 3/4					
22PA0016G-4	16	16	2	4	12	72	20.5
22PA0019G-4	19	19					
22PA0022G-4	22	22 9/16					
22PA0064G-4	64	64	3	5	15	61	25.5
22PA0076G-4	76	76					
22PA0090G-4	90	90 1/4					
22PA0107G-4	107	107 11/64					
22PA0256G-4	256	256	4	6	18	52	30.5
22PA0304G-4	304	304					
22PA0361G-4	361	361					
22PA0428G-4	428	428 11/16					
22PA0509G-4	509	509 17/256					
22PA1024G-4	1024	1024	5	7	21	45	35.5
22PA1216G-4	1216	1216					
22PA1444G-4	1444	1444					
22PA1715G-4	1715	1714 3/4					
22PA2036G-4	2036	2036 17/64					
22PA2418G-4	2418	2418 60/917					

Pinion Specifications/马达齿轮型式

Module/模数	0.4	
No. of teeth/齿数	15	12
Pressure angle/压力角	20°	
Hole diameter/孔径	Φ1.98	
Reduction ratio/减速比	4/16/64/256/1024	5/19/22/76/90/107/304/361/428/509/1216/1444/1715/2036/2418

Most Applied Motors:
 1. 130/180 PMDC motor
 2. 20BYG stepper motor
 适用范围:
 1. 130/180永磁直流电机
 2. 20BYG步进电机

Motor Installation/马达装卸方法

